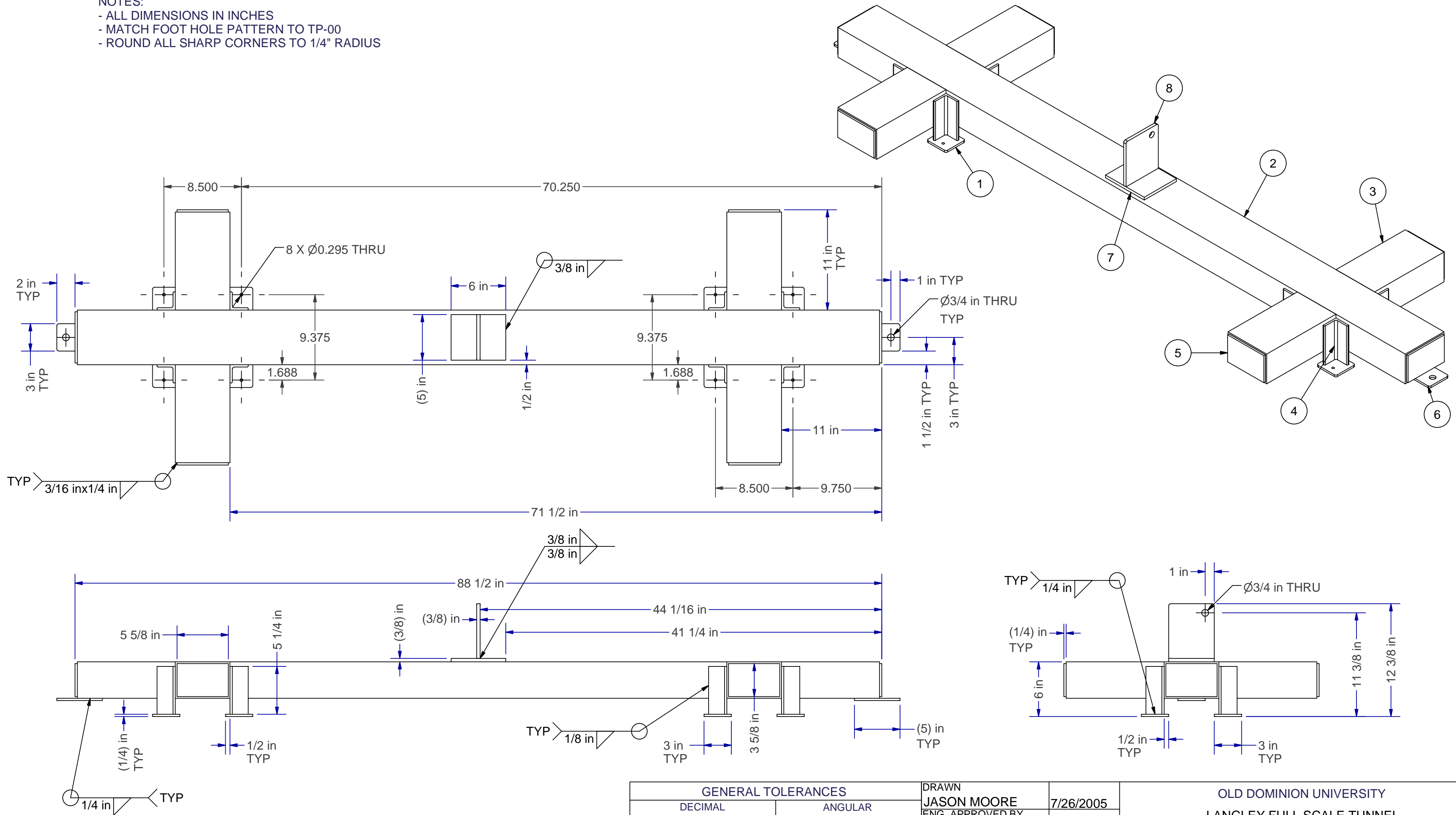


Parts List											
ITEM	QTY	PART NUMBER	DESCRIPTION	MATERIAL	TYP	H	W	L	T	OD	MASS
1	8	FC-01	FOOT PLATE	Steel, ASTM A-36	RECT BAR	0.250	5.000	3.000			0.629 lbmass
2	1	FC-02	MAIN BEAM	Steel, ASTM A 500 GRADE B	RECT TUBE	4.000	6.000	88.000	0.188		90.078 lbmass
3	4	FC-03	WEIGHT SUPPORTS	Steel, ASTM A 500 GRADE B	RECT TUBE	4.000	6.000	10.750	0.188		11.004 lbmass
4	8	FC-04	LEG	Steel, Mild	ANGLE	2.000	2.000	5.250	0.250		1.408 lbmass
5	6	FC-05	END CAP	Steel, ASTM A-36	RECT BAR	0.250	5.000	5.625			1.446 lbmass
6	2	FC-06	SIDE LOAD EYE	Steel, ASTM A-36	RECT BAR	0.250	5.000	3.000			1.030 lbmass
7	1	FC-07	DRAG EYE DOUBLER PLATE	Steel, AISI 1018	RECT BAR	0.375	5.000	6.000			3.190 lbmass
8	1	FC-08	DRAG EYE	Steel, AISI 1018	RECT BAR	0.375	5.000	6.000			3.141 lbmass

NOTES:
 - ALL DIMENSIONS IN INCHES
 - MATCH FOOT HOLE PATTERN TO TP-00
 - ROUND ALL SHARP CORNERS TO 1/4" RADIUS



GENERAL TOLERANCES		DRAWN		OLD DOMINION UNIVERSITY	
DECIMAL	ANGULAR	JASON MOORE	7/26/2005	LANGLEY FULL SCALE TUNNEL	
X.X" ± 0.5"	XX' ± 1'	ENG. APPROVED BY		TITLE	
X.XX" ± 0.05"	XX.X' ± 0.1'	DREW LANDMAN	7/29/2005	FRONT CALIBRATION FRAME	
X.XXX" ± 0.005"	WELDMENTS	LAST UPDATED BY			
X.XXXX" ± 0.0005"	± 1/16"	JASON MOORE	8/16/2005	SIZE	DWG NO
				C	FC-00
				SCALE	REV
				1:8	
				SHEET	1 OF 1

